

Donovan

Shur-Co[®], LLC

Tarps • Tarp Systems • Parts & Accessories



1-800-327-8287
www.donovan-ent.com



1-877-729-2969
www.shurco.com



DUMP BODY SYSTEMS



BULLET

- Covers up to 23' bodies
- Your choice:
 - Electric or crank
 - Rotary switch or rocker with solenoid
 - 3-year motor warranty
 - Straight or 30° bend arms
- Approx. shipping weight: 150 lbs.



Flash

- Covers up to 23' bodies
- Rotary switch kit
- "Unbreakable" extruded aluminum arms
- Unique, patented heavy-duty spring housings
- Optional 30° bend arms
- Approx. shipping weight: 225 lbs.



HAMMER

- Covers up to 23' bodies
- Heavy-duty steel arms
- Your choice:
 - Electric or crank
 - Rotary switch or rocker with solenoid
 - 3-year motor warranty
- Approx. shipping weight: 220 lbs.



5000 series

- Covers up to 18' bodies
- Electric or crank
- Rotary switch kit
- Low-profile arms
- Sturdy 1.25" steel square tube arms
- Approx. shipping weight: 85 lbs. - 165 lbs.



2000 series

- Armless front to rear tarp system
- Automatic tarp return (2000SR)
- Manual crank tarp return (2000X)
- Quick & easy install!
- 2000SR Approx. shipping weight: 110 lbs.
- 2000X Approx. shipping weight: 37 lbs.



TurboTarp2

- Manual wind-up
- Installs in minutes!
- Expands from 60" to 104"
- Perfect for landscapers & light-duty bodies
- Quick & easy tarp replacement
- Approx. shipping weight: 35 lbs. - 45 lbs.



ROLL OFF SYSTEMS



- Strongest tarp available today!
- Ratchet tensioner for safe, easy, roller spring tensioning
- Pre-assembled for easy install
- Covers 15-40 cubic yard containers
- Approx. shipping weight: 1800 lbs.



- Affordable & durable!
- Covers up to 40 cubic yard containers
- Unbreakable pivot arms - 40° bend, low profile
- No cylinders on arms cut repair costs
- Hydraulic power gantry & tarp roller
- Approx. shipping weight: 850 lbs.



- Industry's #1 armless tarp
- Covers up to 40 cubic yard containers
- Gantry raises 15' above truck frame
- Lifetime spring warranty!
- Perfect for narrow city streets
- Approx. shipping weight: 700 lbs.



- Thousands sold!
- Covers up to 40 cubic yard containers
- Gantry raises 12' above truck frame
- Lifetime spring warranty!
- Perfect for narrow city streets
- Approx. shipping weight: 800 lbs.



SIDEWINDER

- Industry's #1 tarp system!
- The Original side-flip tarper for transfer trailers
- Thousands sold!
- Heavy-duty steel construction
- Driver or curb side mount
- Approx. shipping weight: 800 lbs.



SIDEWINDER 350

- Only 350 lbs!
- Aluminum I-beam construction
- No welding required!
- Twin cable design eliminates support ladder & bars
- Approx. shipping weight: 450 lbs.



DOUBLE FLIP

- Opens or closes in 10 seconds!
- Optional self-contained power kit for tippers
- Choice of vinyl or mesh tarp
- Lids overlap when closed, preventing blowout!
- Approx. shipping weight: 1100 lbs.



SHUR-TRAK II
PREMIUM CABLE

- Universal landing
- Adjustable-width bows
- Rolling wheel windguards or continuous wind anchors
- Durable 1/4" cable
- Cable tension scale
- Rear bow stabilizer
- Vinyl-coated or mesh tarp



TRAILER SYSTEMS



Long Arm & Long Arm 41

- Long Arm covers up to 38'
- Long Arm 41 covers 38' - 41' (custom springs)
- "Unbreakable" extruded aluminum arms
- "Unbreakable" underbody springs
- Modular tarp housing included
- Approx. shipping weight: 260 lbs.



- Aluminum latchplate
- Front & rear fabric cap
- Easy-off tarp stops
- Shur-Flex™ crank arm
- Front roll return
- 22-oz. vinyl tarp



- Magnetic braking system
- Universal mounting bracket
- Pivoting motor mount
- Exposed spline
- Spiral spring returns
- Front & rear torsion arms
- SMARTwire™ sealed wire harness
- Flexible joint/elbow with protective rubber boot
- Gate Flex™ option for end dumps
- Available SMART2™ remote



Long Shaft Durabuilt Direct-Drive Motor
Part #61X / 1802066

- 12v / 600w direct-drive motor w/ 3 1/8" output shaft
- 1-year warranty
- Best price!



Long Shaft Durabuilt Direct-Drive Motor
Part #61G / 1802061

- 12v / 600w direct-drive motor
- 3 1/8" output shaft
- 3-year warranty
- Best warranty!



Heavy-Duty Durabuilt Direct Drive Motor
Part #4422 / 1801663

- 12v / 900w direct-drive motor
- 7/8" output shaft
- 3-year warranty
- Extra output for long trailers

Heavy-Duty Rotary Switch Kit
Part #85N / 1802076



Heavy-Duty Rotary Switch (switch only)
Part #600 / 1800120

- Easy install
- Wires directly to battery & motor



Water-Resistant Rocker Switch
Part #1897 / 1800602

- 12 volt
- Mounts in dash or in own bracket (incl.)
- Use with Durabuilt Solenoid Kit

Solenoid Switch
Part #1464 / 1800418

- 12 volt
- Replacement part for #1495 kit



Durabuilt Solenoid Switch Kit
12v, 40 amp Part #1495 / 1800432
12v, 60 amp Part #1497 / 1800434



Dual-Pole Trailer Connector
Part #3848 / 1801377



ELD Conversion Kit
Part #605 / 1800121

Direct-Drive Electric System Conversion Kit
(Includes Extruded Alum. Roller Bar #2365 / 1800737)



Universal Contact Plate
Part #4241 / 1801567



Electric Wire Spools (4 ga., 8 ga.)
4 ga. Part #672 / 1800138
8 ga. Part #2141 / 1800650





PARTS & ACCESSORIES

One-Piece Wind Deflector
Part #1216K / 1801919



Two-Piece Galvanized Steel Wind Deflector
Part #1647K / 1801943



Underbody Spring Assemblies
Driver Side Part #1166 / 1800320
Curb Side Part #1165 / 1800319

• Used on Flash™ and Long Arm™ systems



Extruded Aluminum Roller Bar
Part #2365 / 1800737



Chain Guard (5000)
Part #114 / 1800036



Chain Guard (7000)
Upper - Part #790 / 1800185
Lower - Part #791 / 1800186



Heavy-Duty Ground Level Crank
Part #780 / 1800178

- For bodies 20' and over
- Crank handle folds for low profile
- Separate easy-grip brake for total control



Crank Assembly
Part #441 / 1800088

- 5000 ground level crank box assembly
- Handle grip rotates for low-profile storage



GL Conversion Kit
Part #185 / 1800049



Flat Coil Springs
Part #2416 / 1800763

- Flat coil torsion springs, 5/8"

Tarp Trap
Part #4096 / 1801490



Tall cab shield hold-downs

Spring Trap
Part #3976 / 1801434



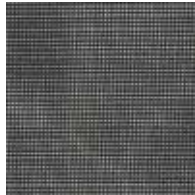
Mesh Tarp Materials

MightyMesh®



- Strongest truck tarp material available today

Heavy-Duty Black Mesh



- Heavy-duty mesh for dump truck & trailer applications

Multi-Color PVC Mesh



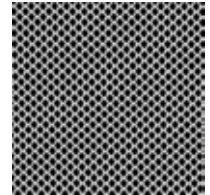
- Industry standard truck tarp material

Knitted Black Mesh



- Designed specially for Hy-Tower™
- Rip resistant
- 70% shade

White Polyester Mesh



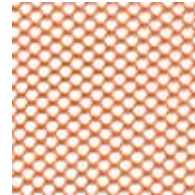
- Good for cold-weather applications



Tarp Materials

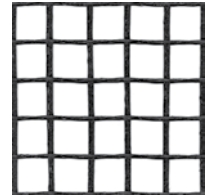


Heavy-Duty Orange Knit



- Standard Sidewinder® tarp
- Polyester

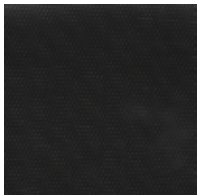
Heavy-Duty Black Grid



- Upgrade Sidewinder® tarp
- PVC / Polyester

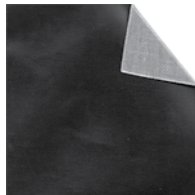
Asphalt Tarp Material (Waterproof, Water Resistant)

18-oz. Vinyl



- Waterproof
- 7 color choices

Donoprene



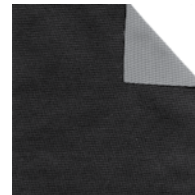
- Waterproof
- Half the weight of vinyl

Asphalt Lumite



- Water resistant
- Used for asphalt
- Lighter than vinyl

Air Bag



- Water resistant
- Lighter than vinyl

RFL



- Water resistant
- Tough to tear
- Good for cold weather