

# TOWMASTER<sup>®</sup>

## TRUCK EQUIPMENT

### EDGE<sup>™</sup>

SERIES



TRUCK BODIES • TRUCK EQUIPMENT • SERVICE • PARTS

Falls

WHELEN<sup>®</sup>  
AUTHORIZED DISTRIBUTOR



COUGAR  
INDUSTRIES INC.

Swenson  
spreader

Minimizer

Aero



FORCE  
America

PULLTARPS  
ADVANCED TAPPING TECHNOLOGIES INC.

"Where Craftsmanship, Service, and Expertise Equals Value for You!"

USA BUILT





Towmaster® built its brand on manufacturing quality products with high dependability and low warranty. Our customers are brand loyal because their Towmaster® equipment has lasted over the long haul. Towmaster® backs up their products with service unsurpassed by any other manufacturer in our field of expertise. When you own a Towmaster® product, you become our customer for life.

Towmaster® is employee owned and operated. We take pride in building quality products that last, so you can be assured that when you purchase a Towmaster®, you are getting everything you paid for and more.

Our Truck Equipment division is no exception. We put the same craftsmanship and dedication to quality that we put into our trailer lines. Towmaster's own manufactured truck dump bodies, the EDGE™ Series, comes in several styles to fit nearly all municipality markets.

Towmaster® offers a complete line of utility and equipment flat-bed and dump trailers both large and small. Capacities range from 2,000 lbs. to 120,000 lbs. Visit your Towmaster® trailer dealer or go to our website to learn more.

Towmaster® - The Standard for the Road Ahead.

©2009 Towmaster, Inc. All rights reserved. Towmaster® and EDGE™ are trademarks of Towmaster, Inc.

EDGE  
SERIES

## TECHNOLOGY

You might think that all plow trucks are the same. They're not. Technology has become more sophisticated over the years, and yet sometimes the old methods and build structure worked better than some of today's. Towmaster® combines what worked well in the past with today's technology and our renowned quality to build our EDGE™ truck bodies.

Then we match high-tech, high-quality brand name components to build a truck to your specifications. All this adds up to a longer lasting and more dependable truck and a better investment for your municipality; an investment you can see.



Photos may show optional equipment.

North American Made



# SERVICE

We can service most any type of truck equipment from plows to hydraulics, lighting systems, hoists and much more. We also install new equipment to exacting standards. Our service professionals are experienced and have access to our fabrication and manufacturing plant for custom fitments.

Whether you bought your equipment from Towmaster or some other source, we can service it and get it back working in your fleet quickly.



# PARTS

Towmaster's parts department stocks hundreds of truck equipment parts and has access to thousands more for quick delivery. You can call them directly and they will be happy to help.

Towmaster is an authorized dealer for several brands including Whelen, Falls Plows, Force America, Aero, Stellar, Pulltarps, Minimizer, Swenson, Cougar and more.

**Call Parts Direct: 320-593-4595**



**"Where Craftsmanship, Service, and Expertise Equals Value for You!"**



# MANUFACTURING

Towmaster manufactures its truck bodies from raw material to finished product in its 130,000 square foot manufacturing facility with state-of-the-art equipment and skilled craftsmen. Our EDGE dump bodies are built tough for the municipal market. Each body is meticulously designed with the latest in 3D CAD software and FEA analysis; fabricated and welded by the finest craftsmen in the industrial manufacturing field; and color match painted to your specifications, then assembled with care and attention to detail.

You can depend on the Towmaster quality that has been well known in the trailer industry for nearly four decades.



# GENUINE

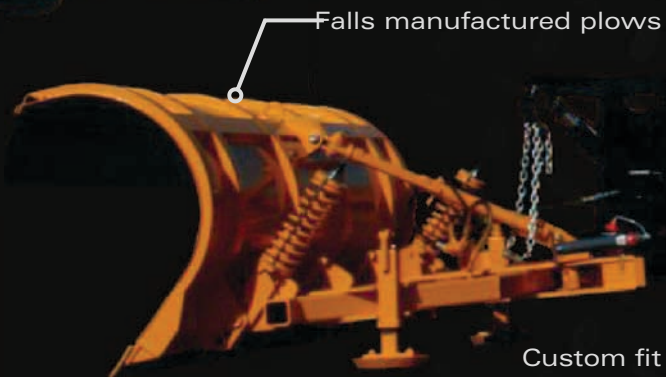
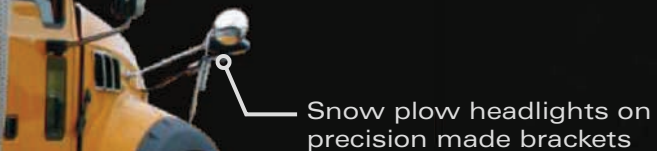
# TOWMASTER





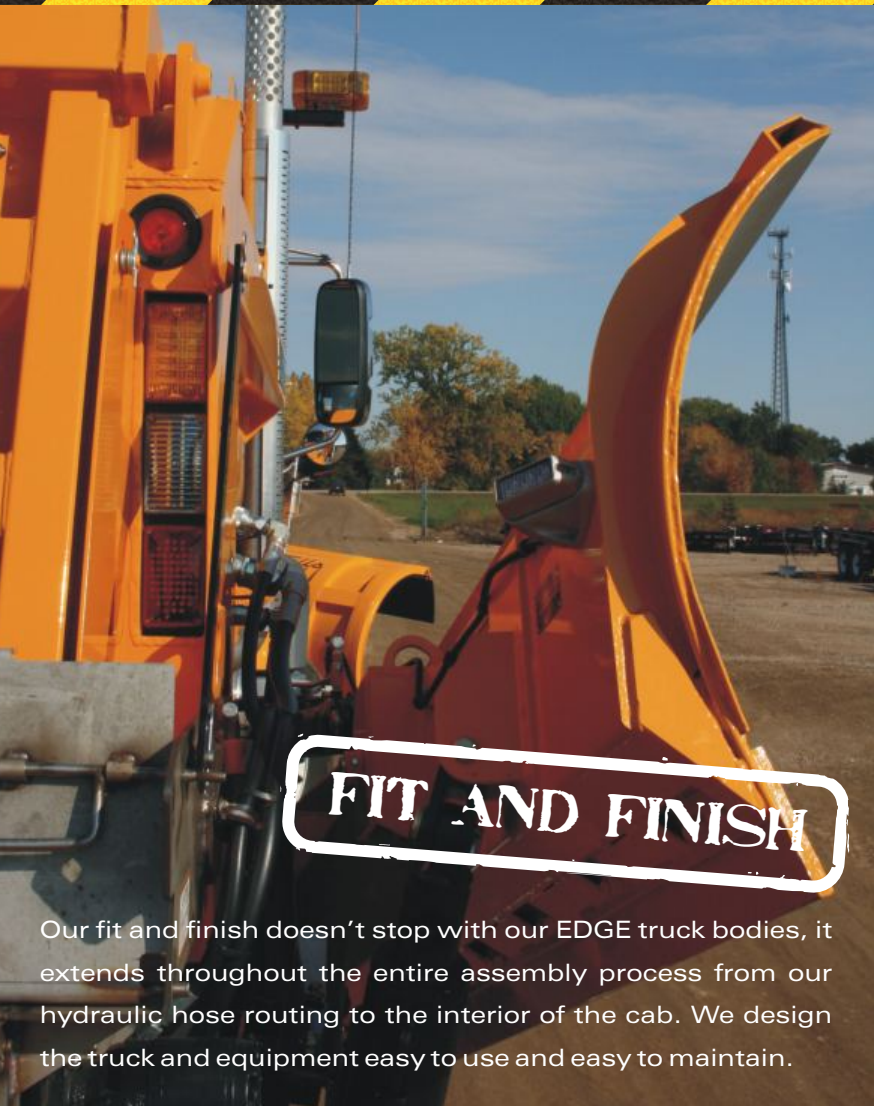
# EDGE<sup>TM</sup> SERIES

We can install on any brand chassis, single or tandem axle.



**"Where Craftsmanship, Service, and Expertise Equals Value for You!"**





## FIT AND FINISH

Our fit and finish doesn't stop with our EDGE truck bodies, it extends throughout the entire assembly process from our hydraulic hose routing to the interior of the cab. We design the truck and equipment easy to use and easy to maintain.



# EDGE<sup>TM</sup> SERIES BODIES

Towmaster's EDGE series truck bodies are available in several configurations to suit your needs. Whether you need stainless steel, Hardox<sup>®</sup> carbon steel, square, elliptical (radius), single axle or tandem axle bodies, Towmaster's EDGE has you covered.

**EDGE<sup>SC</sup>**  
Square Carbon Steel box

**EDGE<sup>SS</sup>**  
Square Stainless Steel box



**EDGE<sup>RC</sup>**  
Radius Carbon Steel box

**EDGE<sup>RS</sup>**  
Radius Stainless Steel box



North American Made





## EDGE-SC

**DIMENSIONS:**  
9'-6" thru 15'-0" long x 96" wide O.D.

**FRONT PANEL:**  
46", 50", or 56" high, 3/16" HARDOX-450TM steel with reinforced top rail  
Optional: 13"x15" vertical doghouse cavity & lift blocks  
Optional: Inclined mount & rubber flap seal  
Optional: Removable tarp mounting brackets  
Optional: Vertical shovel holder(s)

**SIDES:**  
30", 36", or 46" high, 3/16" HARDOX-450TM interior panels  
10ga GR50 outer panels w/sloped center horizontal brace & sloped rubrails  
Fully boxed top rails  
Full depth 7ga stainless steel rear corner posts  
Optional: Board pockets front and rear  
Optional: Inverted angles on top rails for self-cleaning  
Optional: 3-line/4-line/dual 2-line sander manifold(s) at rear corner posts  
Optional: Fixed or removable 3-1/2" Bustin walk rail full length both sides  
Optional: "Tuck-away" or "fold-away" access ladder - LH front, with interior step

**TAILGATE:**  
30", 36", or 46" high, 3/16" HARDOX-450TM main panel  
10 ga GR50 outer panel & reinforcements  
3 panel design  
1-1/4" dia bottom pins  
1" thick upper hinges w/bushings  
1-3/4" dia top pins  
3/8" alloy spreader chains (replaceable)  
1" Steel latches with dual over-center locks  
Airtrip ready linkage  
Optional: Lever top-pin release system (36" gate only)

**FLOOR:**  
1/4" HARDOX-450TM steel  
Full width, one-piece construction

**UNDERSTRUCTURE:**  
W8" x 13.0#/ft structural (I-BEAM) longills  
8" structural channel rear bolster  
Optional: S10" x 25.0#/ft structural (I-BEAM) longills  
Optional: TMTE-1820 hoist lift bracket incorporated  
Optional: 10" structural channel rear bolster

**PREP/PAINT:**  
Exterior & underside industrially steel shot-blasted  
Urethane primed  
Exterior finish coated with color choice polyurethane enamel  
Underside finish coated with gloss black polyurethane

**CAB SHIELD:**  
1/2 type, 24"  
Optional: Fixed "weld-on" style  
Optional: Stationary "free-standing" style  
Optional: 2 vertical shovel holders style (stationary only)  
Optional: Adjustable tubing strobe brackets  
Optional: Cab shield mounted reservoir brackets(stationary only)  
Optional: Full center window (stationary only)

**SPILL SHIELD:**  
1/4" Gr 50 steel construction  
4", 6", or 12" extension  
Bolt together construction  
Body/sander bracket mounts  
Painted



## EDGE-SS

**DIMENSIONS:**  
9'-6" thru 15'-0" long x 96" wide O.D.

**FRONT PANEL:**  
46", 50", or 56" high, 7ga stainless steel with reinforced top rail  
Optional: 13"x15" vertical doghouse cavity & carbon steel lift blocks  
Optional: Inclined mount & rubber flap seal  
Optional: Removable tarp mounting brackets  
Optional: Vertical shovel holder(s)

**SIDES:**  
30", 36", or 46" high, 7ga stainless steel interior panels  
10ga stainless steel outer panels with sloped center horizontal brace & sloped rubrails  
Fully boxed top rails  
Full depth 7ga stainless steel rear corner posts  
Optional: Board pockets front and rear  
Optional: Inverted angles on top rails for self-cleaning  
Optional: 3-line/4-line/dual 2-line sander manifold(s) at rear corner posts  
Optional: Stainless steel flatbar tie rail full length both sides  
Optional: Removable 3-1/2" Bustin (carbon steel) walk rail full length both sides  
Optional: Carbon steel "tuck-away" or stainless steel "fold-away" access ladder - LH front, with interior step

**TAILGATE:**  
30", 36", or 46" high, 3/16" HARDOX-450TM main panel  
10 ga stainless steel outer panel & reinforcements  
3 panel design  
1-1/4" dia bottom pins  
1" thick upper hinges w/bushings  
1-3/4" dia top pins  
3/8" alloy spreader chains (replaceable)  
1" Latches with dual over-center locks  
Airtrip ready linkage  
Optional: Lever top-pin release system (36" gate only)

**FLOOR:**  
1/4" HARDOX-450TM steel  
Full width, one-piece construction

**UNDERSTRUCTURE:**  
W8" x 13.0#/ft structural (I-BEAM) longills  
8" structural channel rear bolster  
Optional: S10" x 25.0#/ft structural (I-BEAM) longills  
Optional: TMTE-1820 hoist lift bracket incorporated  
Optional: 10" structural channel rear bolster

**PREP/PAINT:**  
Stainless steel exterior acid washed, left in mill finish  
Underside industrially steel shot-blasted  
Underside & carbon steel parts urethane primed  
Underside & carbon steel parts finish coated with gloss black polyurethane

**CAB SHIELD:**  
1/2 type, 24" Stainless steel construction  
Optional: Fixed "weld-on" style  
Optional: Stationary "free-standing" style (vertical stand carbon steel painted)  
Optional: 2 vertical shovel holders style (stationary only)  
Optional: Adjustable tubing strobe brackets (carbon steel painted)  
Optional: Cab shield mounted reservoir brackets(stationary only)  
Optional: Full center window (stationary only)

**SPILL SHIELD:**  
1/4" Gr 50 steel construction  
4", 6", or 12" extension  
Bolt together construction  
Body/sander bracket mounts  
Painted



## EDGE-RC

**DIMENSIONS:**  
9'-6" thru 15'-0" long x 96" wide O.D.

**FRONT PANEL:**  
46", 50", or 56" high, 3/16" HARDOX-450TM steel with reinforced top rail  
Optional: 13"x15" vertical doghouse cavity & lift blocks  
Optional: Inclined mount & rubber flap seal  
Optional: Removable tarp mounting brackets  
Optional: Vertical shovel holder(s)

**SIDES:**  
30", 36", or 46" high, 3/16" HARDOX-450TM interior panels  
10ga GR50 outer panels w/sloped center horizontal brace & sloped rubrails  
Fully boxed top rails  
Full depth 7ga stainless steel rear corner posts  
Optional: Board pockets front and rear  
Optional: Inverted angles on top rails for self-cleaning  
Optional: 3-line/4-line/dual 2-line sander manifold(s) at rear corner posts  
Optional: Fixed or removable 3-1/2" Bustin walk rail full length both sides  
Optional: "Tuck-away" or "fold-away" access ladder - LH front, with interior step

**TAILGATE:**  
30", 36", or 46" high, 3/16" HARDOX-450TM main panel  
10 ga GR50 outer panel & reinforcements  
3 panel design  
1-1/4" dia bottom pins  
1" thick upper hinges w/bushings  
1-3/4" dia top pins  
3/8" alloy spreader chains (replaceable)  
1" Steel latches with dual over-center locks  
Airtrip ready linkage  
Optional: Lever top-pin release system (36" gate only)

**FLOOR:**  
1/4" HARDOX-450TM steel  
Full width, one-piece construction

**UNDERSTRUCTURE:**  
W8" x 13.0#/ft structural (I-BEAM) longills  
8" structural channel rear bolster  
Optional: S10" x 25.0#/ft structural (I-BEAM) longills  
Optional: TMTE-1820 hoist lift bracket incorporated  
Optional: 10" structural channel rear bolster

**PREP/PAINT:**  
Exterior & underside industrially steel shot-blasted  
Urethane primed  
Exterior finish coated with color choice polyurethane enamel  
Underside finish coated with gloss black polyurethane

**CAB SHIELD:**  
1/2 type, 24"  
Optional: Fixed "weld-on" style  
Optional: Stationary "free-standing" style  
Optional: 2 vertical shovel holders style (stationary only)  
Optional: Adjustable tubing strobe brackets  
Optional: Cab shield mounted reservoir brackets(stationary only)  
Optional: Full center window (stationary only)

**SPILL SHIELD:**  
1/4" Gr 50 steel construction  
4", 6", or 12" extension  
Bolt together construction  
Body/sander bracket mounts  
Painted



## EDGE-RS

**DIMENSIONS:**  
9'-6" thru 15'-0" long x 96" wide O.D.

**FRONT PANEL:**  
46", 50", or 56" high, 7ga stainless steel with reinforced top rail  
Optional: 13"x15" vertical doghouse cavity & carbon steel lift blocks  
Optional: Inclined mount & rubber flap seal  
Optional: Removable tarp mounting brackets  
Optional: Vertical shovel holder(s)

**SIDES:**  
30", 36", or 46" high, 7ga stainless steel panels  
18" radius corners  
Fully boxed top rails  
Full depth 7ga stainless steel rear corner posts  
Optional: Board pockets front and rear  
Optional: Inverted angles on top rails for self-cleaning  
Optional: 3-line/4-line/dual 2-line sander manifold(s) at rear corner posts  
Optional: Fixed stainless steel flat-bar tie rail full length both sides  
Optional: Removable 3-1/2" Bustin (carbon steel) walk rail full length both sides  
Optional: Carbon steel "tuck-away" or stainless steel "fold-away" access ladder - LH front, with interior step

**TAILGATE:**  
30", 36", or 46" high, 3/16" HARDOX-450TM main panel  
10ga stainless steel outer panel & reinforcements  
3 panel design  
1-1/4" dia bottom pins  
1" thick upper hinges w/bushings  
1-3/4" dia top pins  
3/8" alloy spreader chains (replaceable)  
1" Latches with dual over-center locks  
Airtrip ready linkage  
Optional: Lever top-pin release system (36" gate only)

**FLOOR:**  
1/4" HARDOX-450TM steel  
48" wide one-piece construction

**UNDERSTRUCTURE:**  
W8" x 13.0#/ft structural (I-BEAM) longills  
8" structural channel rear bolster  
Optional: S10" x 25.0#/ft structural (I-BEAM) longills  
Optional: TMTE-1820 hoist lift bracket incorporated  
Optional: 10" structural channel rear bolster

**PREP/PAINT:**  
Stainless steel exterior acid washed, left in mill finish  
Underside industrially steel shot-blasted  
Underside & carbon steel parts urethane primed  
Underside & carbon steel parts finish coated with gloss black polyurethane

**CAB SHIELD:**  
1/2 type, 24" stainless steel construction  
Optional: Fixed "weld-on" style  
Optional: Stationary "free-standing" style (vertical stand carbon steel painted)  
Optional: 2 vertical shovel holders style (stationary only)  
Optional: Adjustable tubing strobe brackets (carbon steel painted)  
Optional: Cab shield mounted reservoir brackets(stationary only)  
Optional: Full center window (stationary only)

**SPILL SHIELD:**  
1/4" Gr 50 steel construction  
4", 6", or 12" extension  
Bolt together construction  
Body/sander bracket mounts  
Painted





# HOISTS



## TELESCOPIC Hoist Systems

Located at the front of the body, these hoists have a relatively compact footprint, and require a very small vertical doghouse cavity in the body to accommodate them. Utilized on our Tandem Axle dump bodies, these hoists allow for the lowest mounting height available, a substantial reduction in dead weight (when compared to sub-frame style hoist), and lift the body from the best leverage point.

- Mailhot Trunion-Mount telescopic cylinders (available Single Acting or Double Acting) are Liquid Salt-Bath Nitrided to eliminate corrosion, enhance wear, and ensure superior strength.
- Towmaster manufactured Cylinder/Hoist base
- Towmaster Model TMTE-48 Stabilizer eliminates body sway and protects hoist cylinder & rear hinge-point from damage. Integrated Safety Props are easy to use and align every time. Stabilizer is bolted (not welded) to body longsills, allowing easy maintenance in the future.
- Towmaster manufactured Solid-Block rear Hinge-Point with precision machined pins and blocks, for added stability & cycle wear resistance.

## SCISSOR Hoist Systems

Our scissor hoist systems are powerful, yet compact, and do not require a sub-frame, thus allowing the lowest mounting height available in the industry. Utilized on our Single Axle dump bodies, these hoists are matched with our Solid Block rear Hinge-Point, providing quick lifts, great stability and superior ruggedness.

- Integrated Self-Storing Safety Props (a Towmaster Exclusive) provide un-attended alignment every time, and store away without interference of other equipment. No more pockets on the bodies, or rusted up struts outside the truck frame!
- Lift unit is bolted (not welded) to longsills for ease of maintenance or removal in the future.





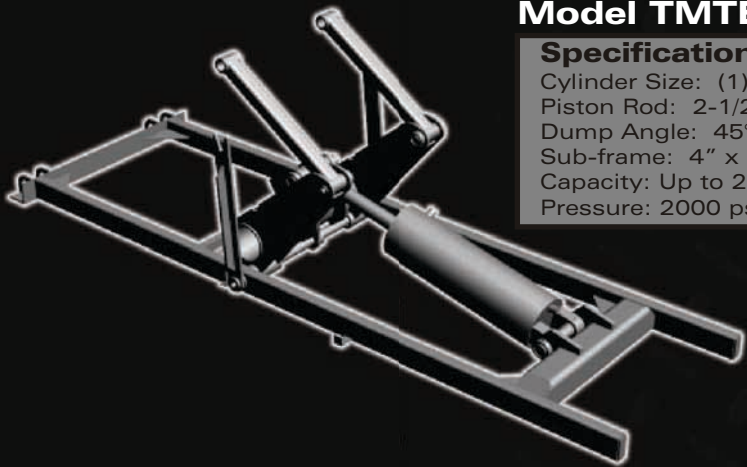
## HITCH ASSEMBLIES

Towmaster's double arm hoists are designed for the severe environment of today's municipal snowplow trucks. With the sub-frame constructed of tubing; twisting and motion is eliminated, thus reducing the stress and fatigue that most channel type sub-frame hoists experience. The massive, rigid trunnion assembly is directly connected to the lift cylinders, equalizing the full load of the body onto the hoist. Sub-frame spreading is totally eliminated, even on uneven ground. The 2000 psi operating pressure reduces component wear, and ensures longevity of the hoist. These super heavy duty hoists are easy to service and maintain, giving you great value.

### Model TMTE-1820DA

#### Specifications:

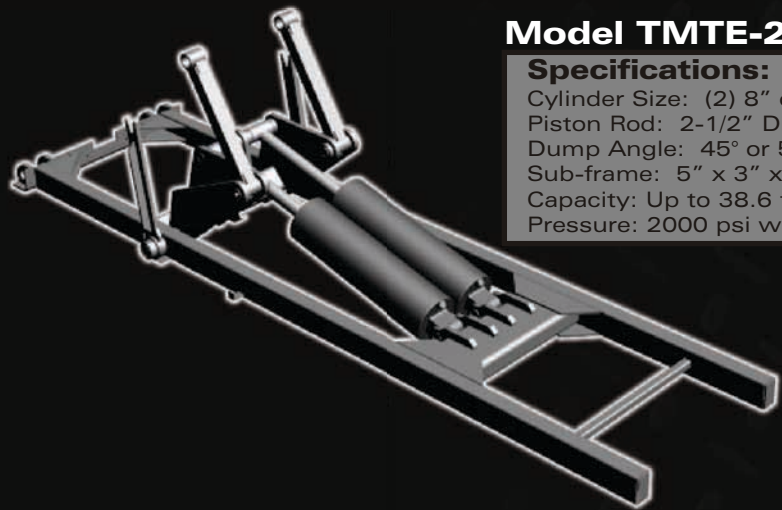
Cylinder Size: (1) 8" dia x 20" Stroke  
Piston Rod: 2-1/2" Diameter  
Dump Angle: 45° or 50°  
Sub-frame: 4" x 2" x 1/4" Tubing  
Capacity: Up to 20.2 tons  
Pressure: 2000 psi working



### Model TMTE-2824DA

#### Specifications:

Cylinder Size: (2) 8" dia x 24" Stroke  
Piston Rod: 2-1/2" Diameter  
Dump Angle: 45° or 50°  
Sub-frame: 5" x 3" x 5/16" Tubing  
Capacity: Up to 38.6 tons  
Pressure: 2000 psi working



Towmaster's rear towing hitches are custom built to the customer's requirements. Our Heavy Duty package (pictured) is rated at 90,000 lb Gross Trailer Weight, and includes choices of air-cushion and non-air cushion pintle hooks, with Safety D-Rings. The modular construction provides for many Pintle Hook heights, as well as positions in relation to the rear tire face. Air, Electrical, and Hydraulic hookups can be configured to your needs in a neat and functional manner.

Our Medium Duty packages are rated at a maximum of 40,000 lb Gross Trailer Weight, and allow for several variations such as:

- Non-Air Cushion Pintle-Hooks
- Pintle-Ball Combo Hitches
- Receiver Tubes
- Receiver Draw-Bars
- 6 round, 7 round, & 7 RV electrical sockets
- Air Glad Hands



**"Where Craftsmanship, Service, and Expertise Equals Value for You!"**



## BRANDS YOU KNOW

# Falls



We sell, service and install the brands you already know and are familiar with. Towmaster is an authorized dealer for these and other truck equipment brands.







# LOOKING AHEAD

Towmaster is committed to quality; committed to performance; committed to service; and committed to the future. We will be in business for decades to come, and we are committed to the truck equipment industry. Most of all we are committed to you, our customer. We are here to help you with any questions about the products we produce and sell, and are here to provide you with the best value for your money spent.

**"Where Craftsmanship, Service, and Expertise Equals Value for You!"**





## USA DESIGNED AND BUILT

The Standard for the Road Ahead.

**888-805-5971**

Local: 320-693-7900

Fax: 320-693-7921

**[www.towmaster.com](http://www.towmaster.com)**

Towmaster, Inc., 61381 US Hwy 12, Litchfield, MN 55355

