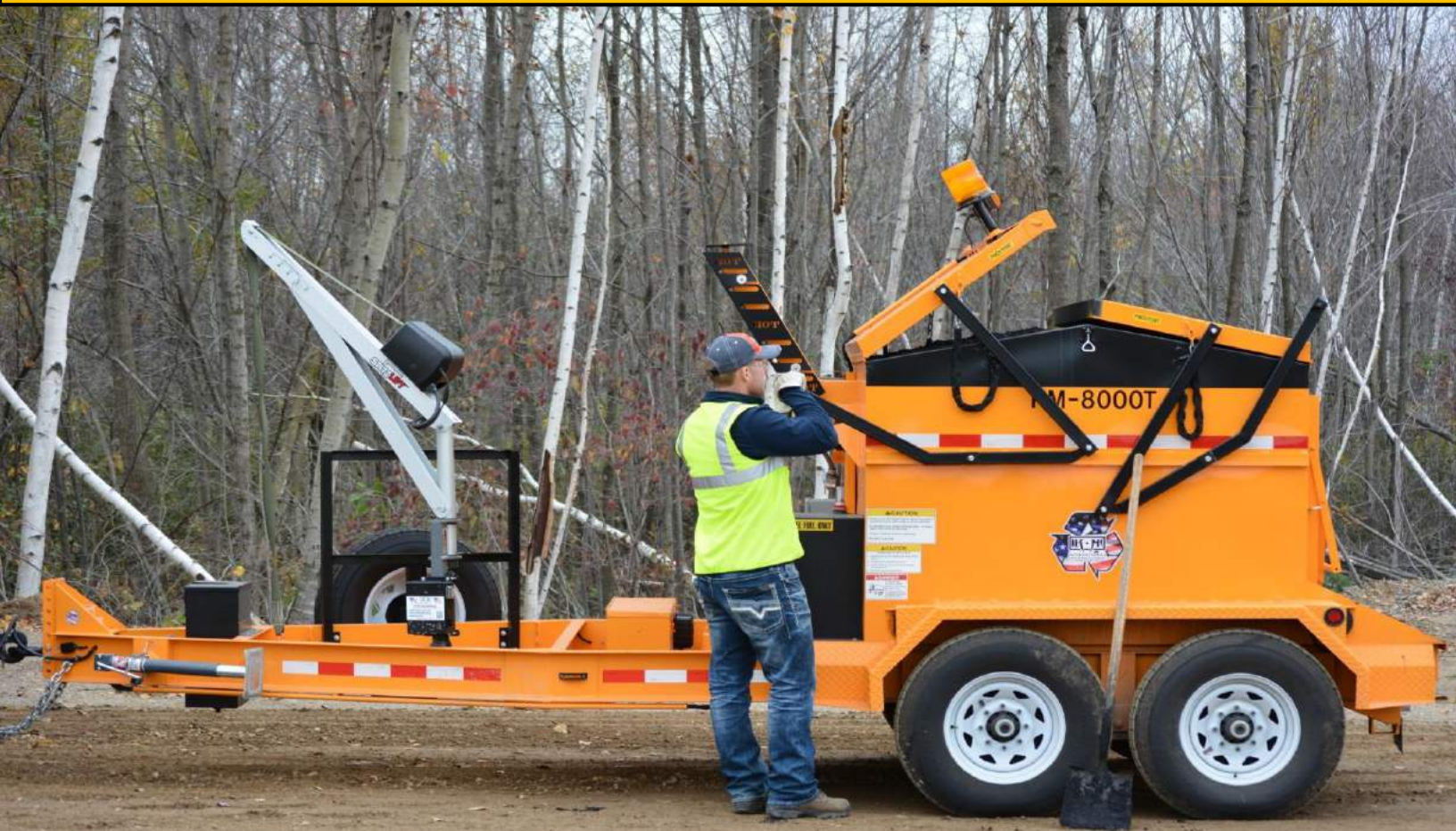


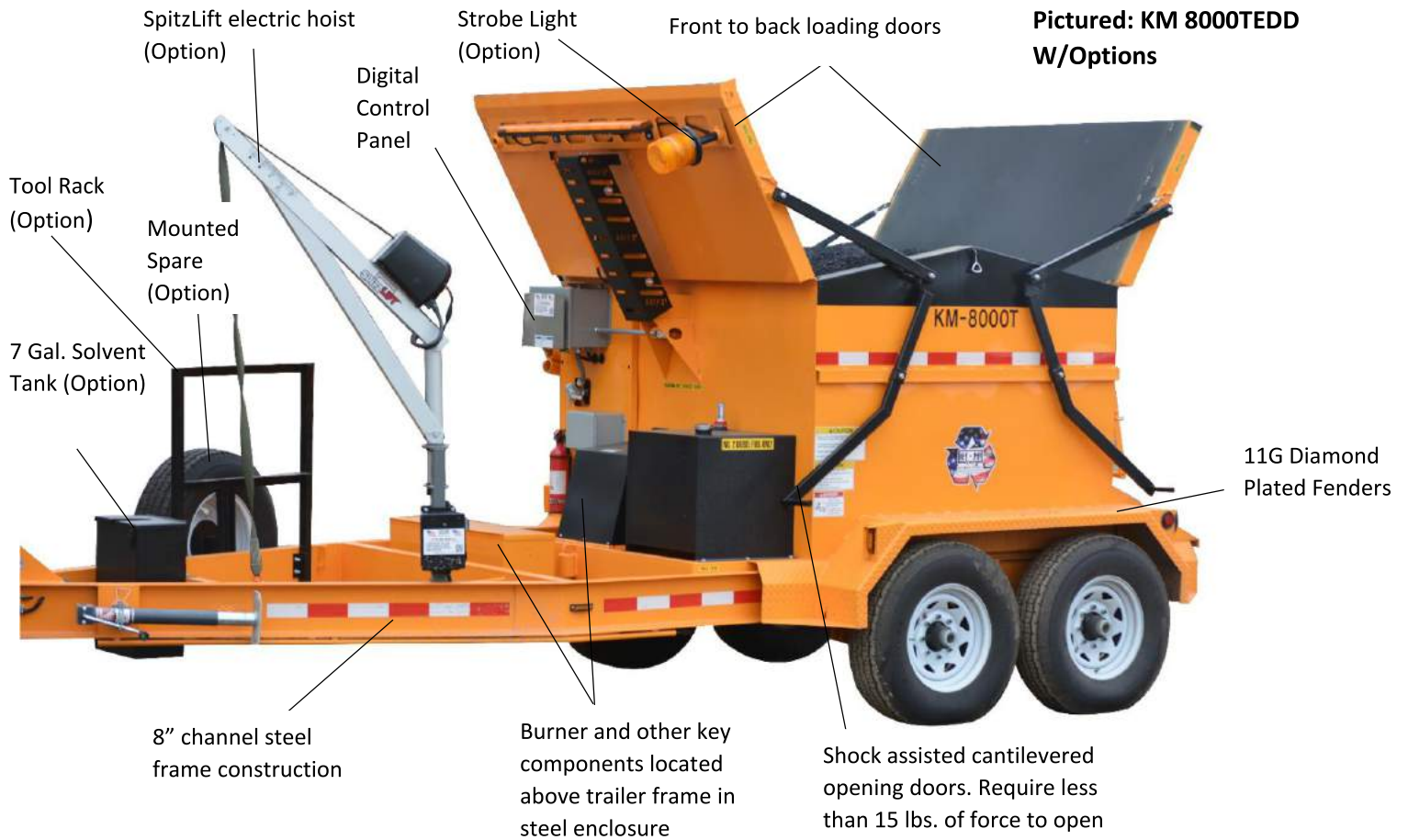
KM 8000T ASPHALT HOTBOX RECLAIMER



Innovative Asphalt Maintenance Solutions



The KM 8000T is a 4 ton hotbox reclaimer that allows the user to maintain hot mix asphalt (HMA) or cold patch material at a workable temperature for up to 48 hours for transportation and use, or reclaim bulk stored un-compacted virgin mix overnight (8-10 hours). KM International offers several options allowing you to customize your hotbox reclaimer to fit your exact needs and specifications.



Specifications	KM 8000T Hotbox Reclaimer
Capacity	8,000 Lbs.
Heating Element	105,000BTU Diesel Burner 60,000 BTU Propane Burner
Construction	All triple welded steel, 16G Skin and 12G asphalt compartment
Dump (Optional)	52° Hydraulic scissor hoist 16,000LB lifting capacity
Filling Doors	Two insulated lids
Shovel Doors	Two insulated doors on sliding track design. 17"W x 21"L
Dimensions	216" x 96" x 84"
Axles	Dual 7,000lb leaf spring axles
Weight	4,450Lbs.
Lighting	LED Lighting
Warranty	2 years on parts and workmanship 5 year of trailer frame structure
Options	Spare tire, Solvent Tank, Tack Tank, Strobe Light, Arrow Board, Winch and Davit, Torch, Spray Tack Unit

For full specifications or pricing contact KM International or an Authorized Dealer



Diesel control panel utilizes PLC and HMI digital control system. Control panel has 168 hour (7 day) on delay timer and low temp thermostat.



Burner and other key components are located above trailer frame and in steel enclosure. By locating the burner above the trailer frame it is protected from road debris and grime, resulting in a low overall maintenance cost.



Dual shovel doors making it easy for two people to shovel at once.

Toll Free: 800-492-1757

Website: www.kminternational.com



Your KM International Dealer Is:



Litchfield, MN - 800-462-4517 - towmastertruck.com