

KM T-2 ASPHALT RECYCLER



Innovative Asphalt Maintenance Solutions



The KM T-2 Asphalt Recycler will recycle asphalt millings, chunks, or pulverized material at a rate of 4 tons an hour. The KM T-2 will produce plant quality or better than plant quality HMA at \$20-\$25 a ton. Have the ability to produce HMA whenever and where ever you want.



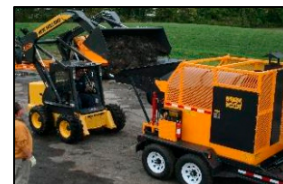
Specifications	KM T-2 Asphalt Recycler
Dimensions	23'10" x 8' x 9'
Weight	8,500lbs.
Axles	Dual 7,000lbs each
Burner	Beckett Model SDC: 700,000 BTU
Hydraulic Controls	Drum Rotation, Loading Chute, Dump
Load Size	2,600 Lbs.
Operation Temp. Range	280°F- 360°F
Agitators	Seven 3/16" steel, 450 brinell hardened
Warranty	2 year on parts and workmanship 5 year on trailer frame structure



Hydraulically controlled dump feature for easy unloading



Becket burner located on swivel arm



Easily loaded with front end loader

For full specifications or pricing contact KM International or an Authorized Dealer

Toll Free: 800-492-1757

Website: www.kminternational.com



Your KM International Dealer Is:



Litchfield, MN - 800-462-4517 - towmastertruck.com